



INFORMATION TOOLS

Brennan Walsh

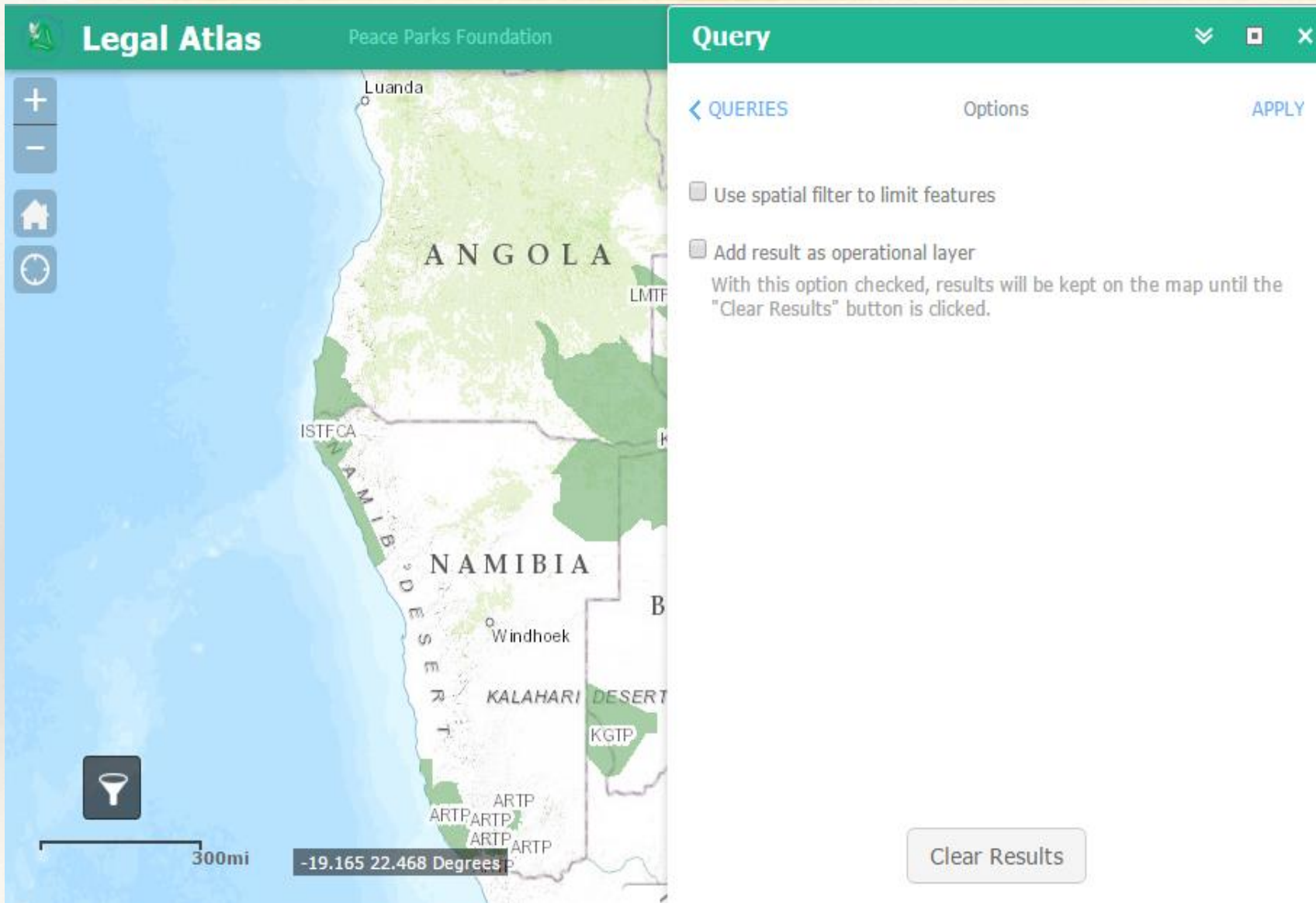
Peace Parks Foundations

Setup 1:

Select the Query Tool Icon.

Contains: 9 categories

- Environmental
- Forest
- Protected Areas
- Landtenure
- Marine
- Tourism
- Veterinary
- Wildlife Management
- Water



Legal Atlas Peace Parks Foundation

Query Options APPLY

← QUERIES

Use spatial filter to limit features

Add result as operational layer
With this option checked, results will be kept on the map until the "Clear Results" button is clicked.

300mi

-19.165 22.468 Degrees

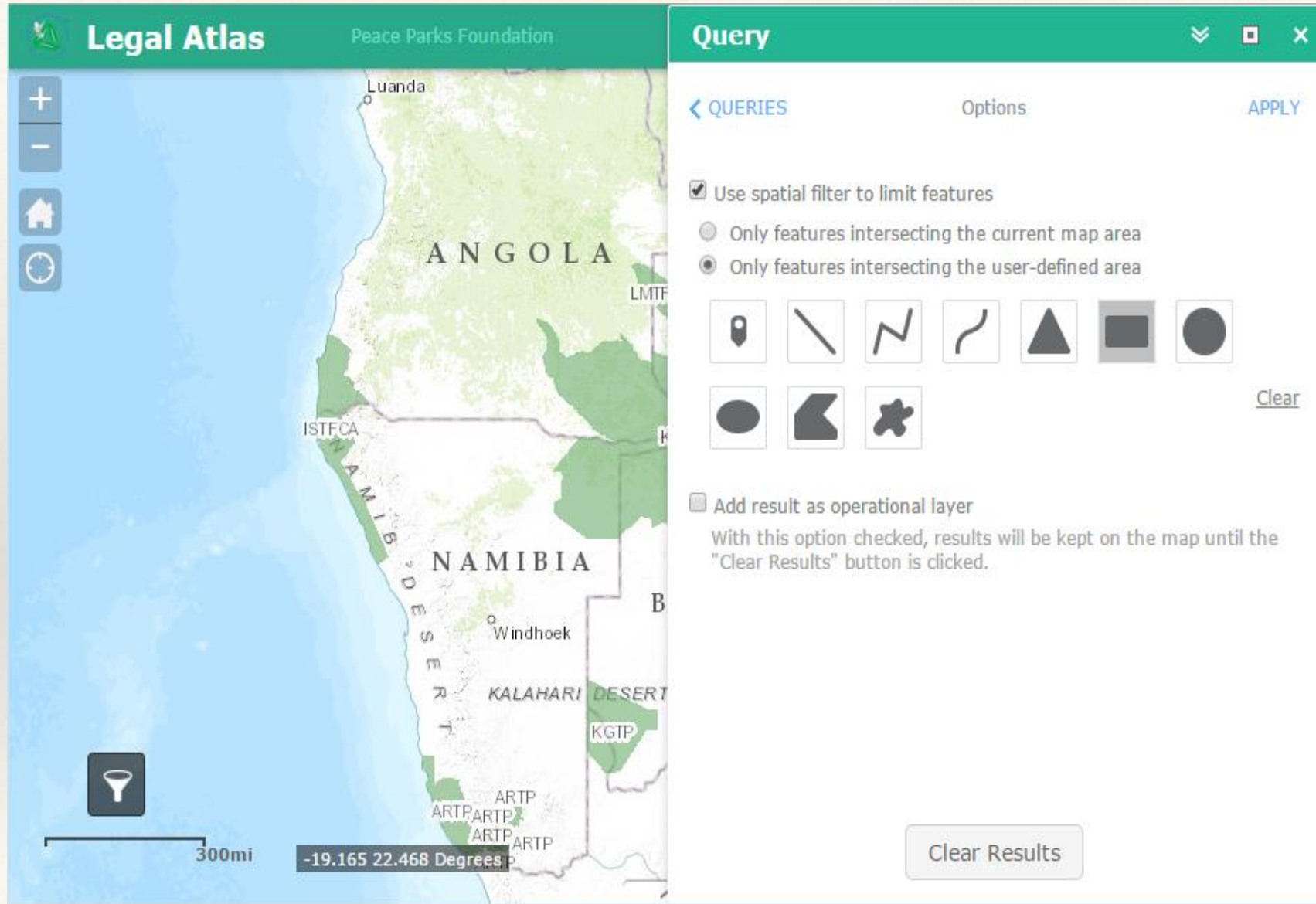
Clear Results

Setup 2:

Select a Spatial Filter.

Two options:

- A. Define your own spatial extent
- B. Select the current extent



Legal Atlas Peace Parks Foundation

Query [Dropdown] [Close]

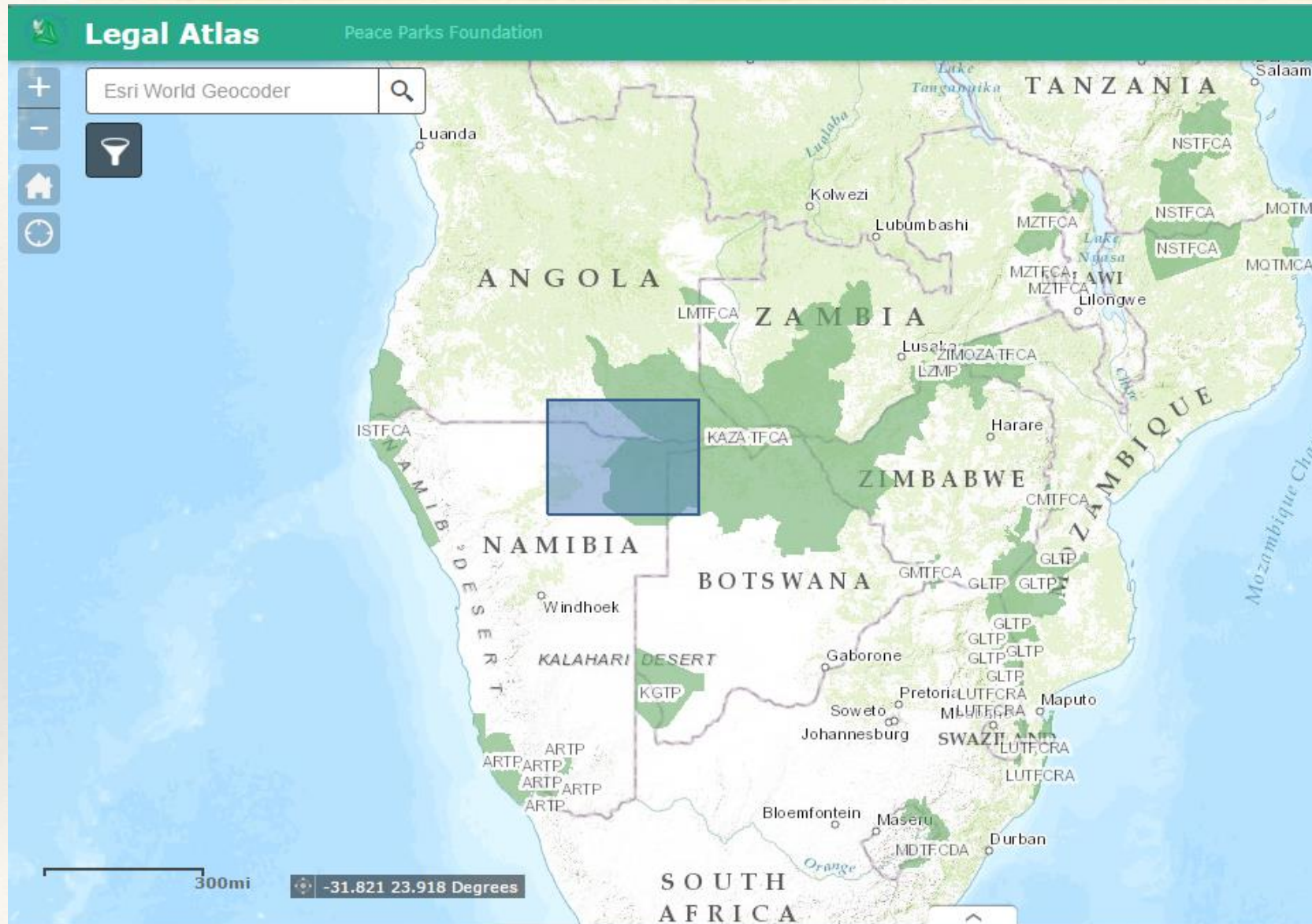
QUERIES Options **APPLY**

- Use spatial filter to limit features
 - Only features intersecting the current map area
 - Only features intersecting the user-defined area
- Add result as operational layer
With this option checked, results will be kept on the map until the "Clear Results" button is clicked.

Clear Results

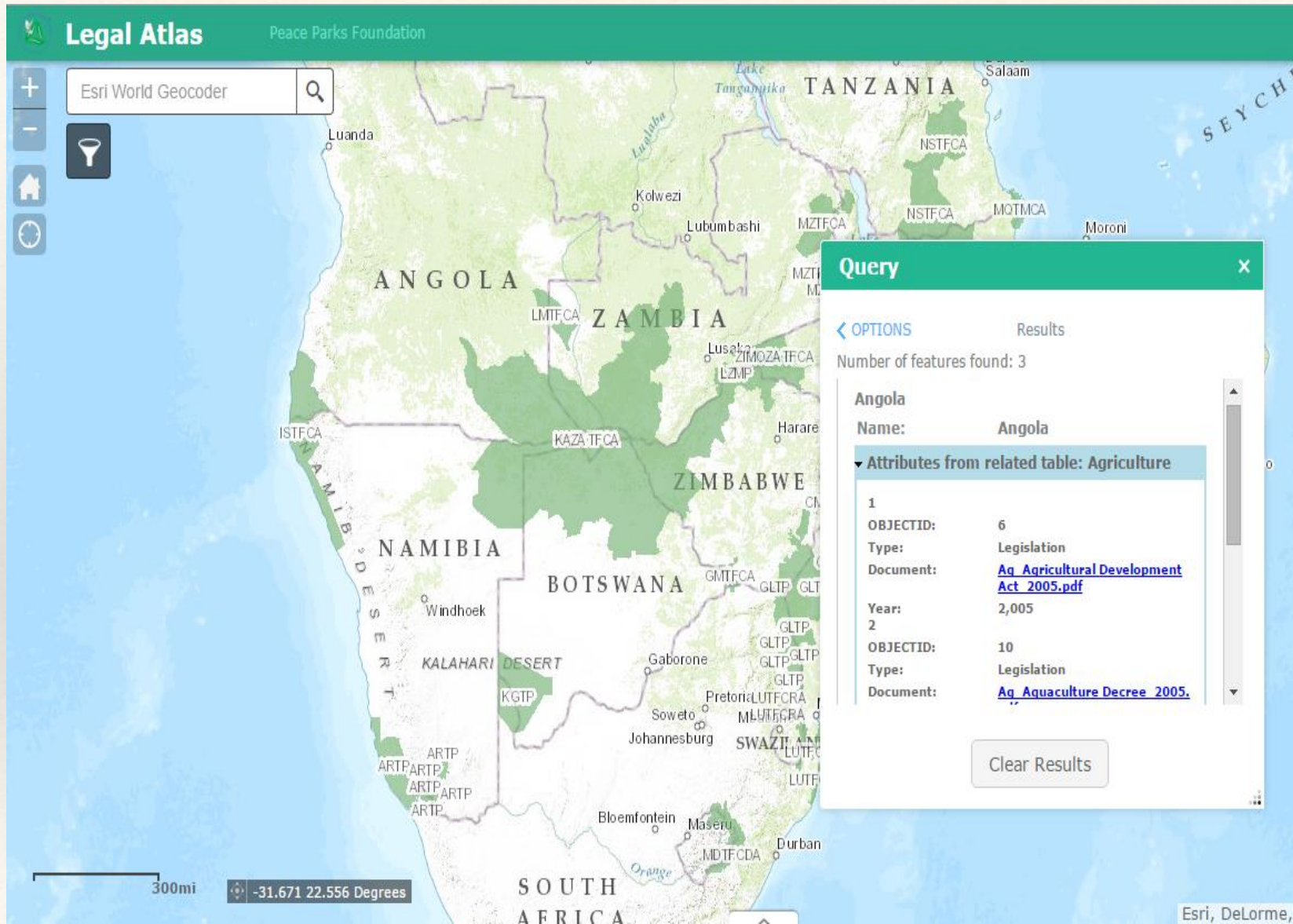
Setup 3:

Using a custom spatial filter



Setup 4:

Draw on the map to use the custom spatial filter



Legal Atlas Peace Parks Foundation

Esri World Geocoder

Query

Options Results

Number of features found: 3

Angola

Name: Angola

Attributes from related table: Agriculture

1	OBJECTID:	6
	Type:	Legislation
	Document:	Aq_Agricultural Development Act 2005.pdf
	Year:	2,005
2	OBJECTID:	10
	Type:	Legislation
	Document:	Aq_Aquaculture Decree 2005.

Clear Results

300mi -31.671 22.556 Degrees

Esri, DeLorme, I

Setup 5:

Draw on the map to use the custom spatial filter

How do you Contribute to the Legal Atlas

Just send a mail

to

maps@ppf.org.za

and

Include in your email the following

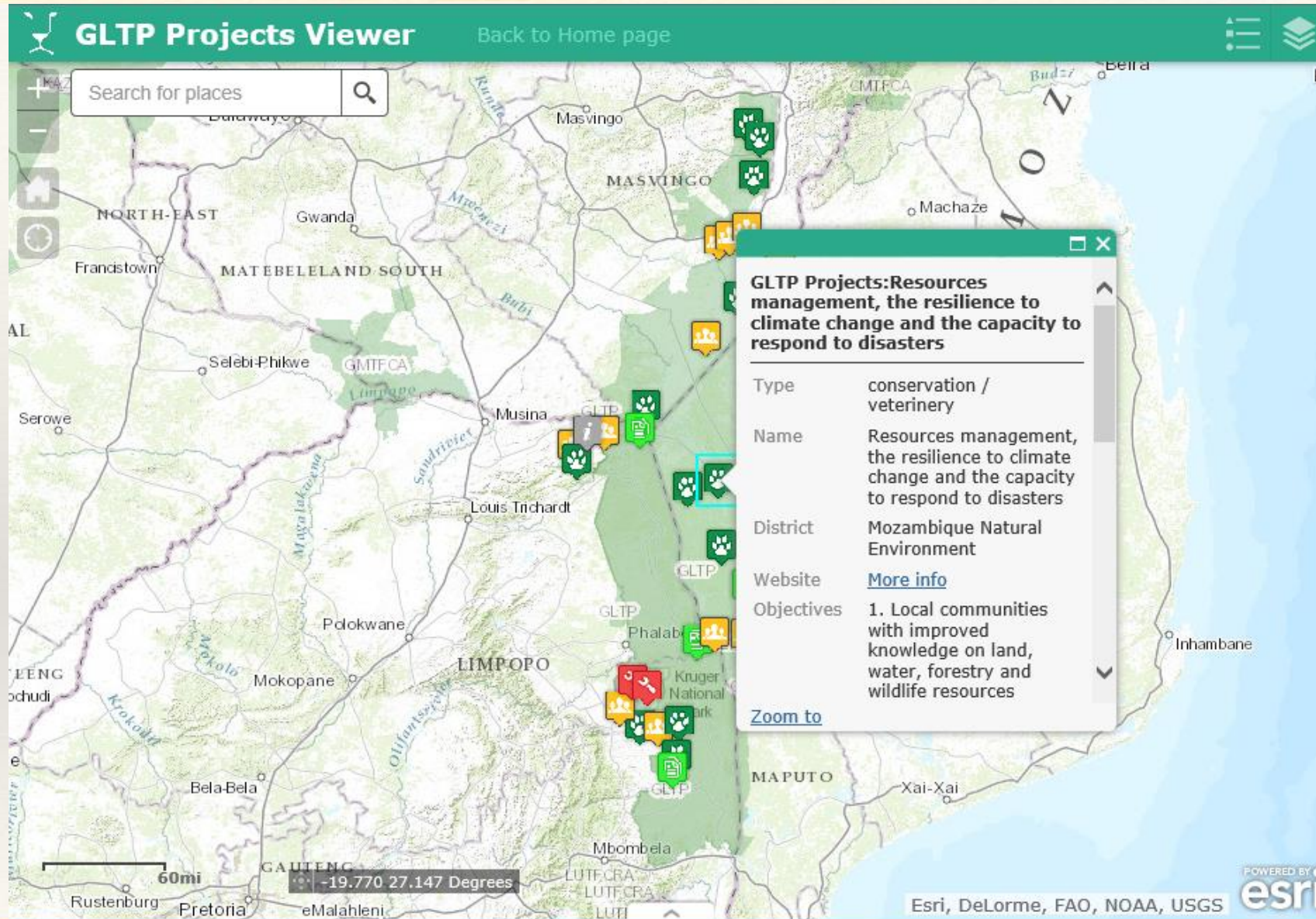
1. PDF document
2. Country
3. Year
4. Relevant Category

Coming Soon

online form submission to the legal atlas

Show Casing Some of your work

- GLTP Projects
- SMART Projects
- KAZA Accommodation



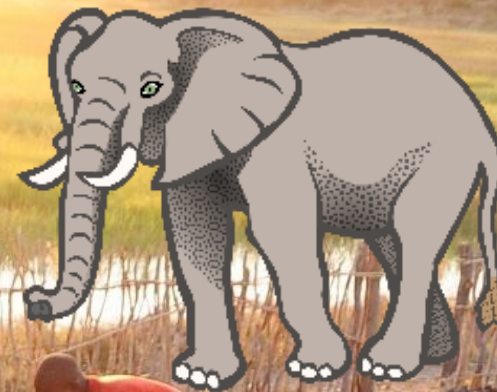
Collecting Data

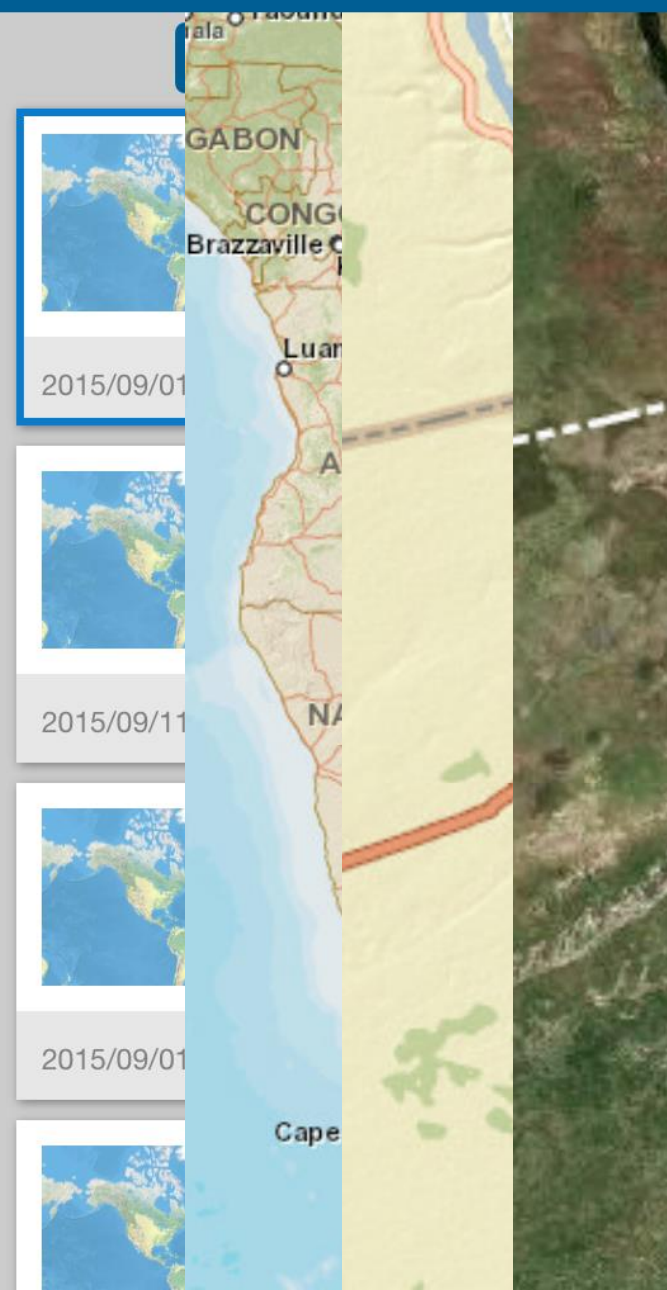
- ArcGIS Collector
- PPF APP
- Cybertracker



MOOVIT

Human Wildlife Conflict





- Location
- Latitude
- Longitude
- HWC
- HWC
- Date
- Park Rep
- Complain
- Preventat
- Villager A
- Impact or
- Notes

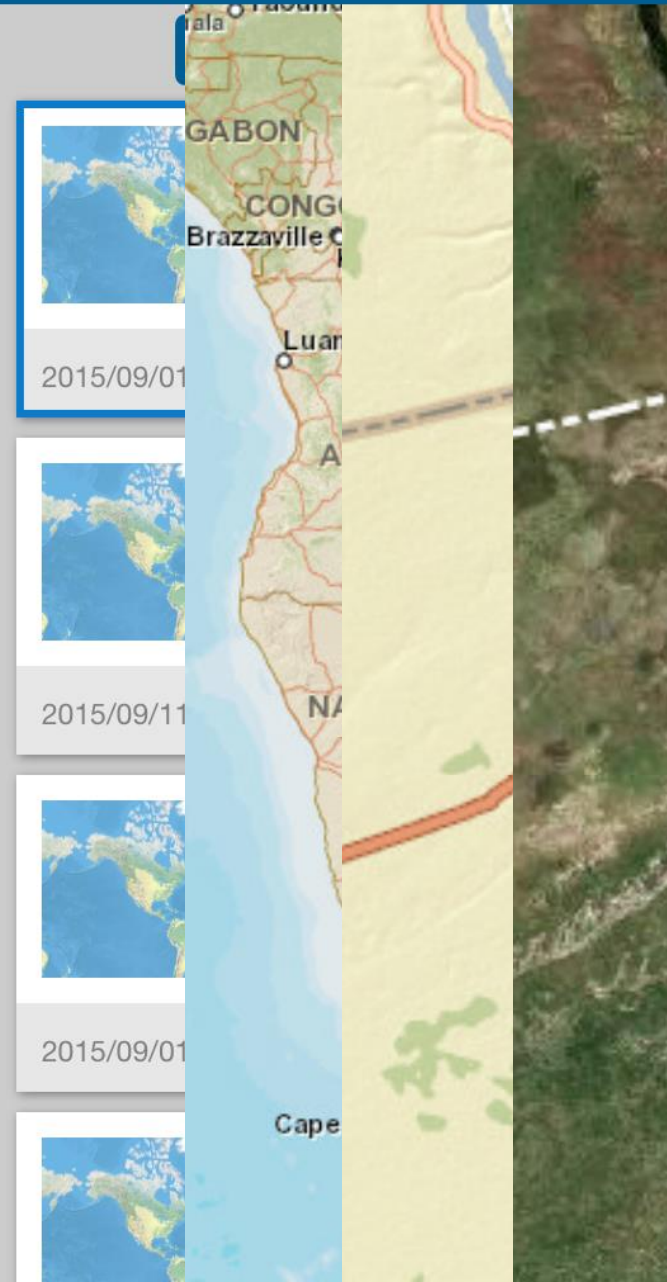
- <No valu
- 1 Crop
- View
- New
- 2 Infra
- View
- New
- 3 Attac
- View
- New
- 4 Attac
- View

Crop Type: Cow Peas

- Crop Type
Cow Peas
- Crop Age
- Damage Type
- Damage Rating
- Cause
- Field Length
- Field Width
- Damage Length
- Damage Width
- Meaure Units



Cybertracker



		Crop Type: Cow Peas	
			Crop Type
			Cow Peas
			Crop Age
HWC	<No value	1 Crop	Damage Type
HWC	None	View	Damage Rating
Date	Chilies	New	Cause
Park Repr	Fence	2 Infra	Field Length
Complain	Restrain	View	Field Width
Preventat		New	Damage Length
Villager Av		3 Attac	Damage Width
Impact or		View	Meaure Units
Notes		New	
		4 Attac	
		View	



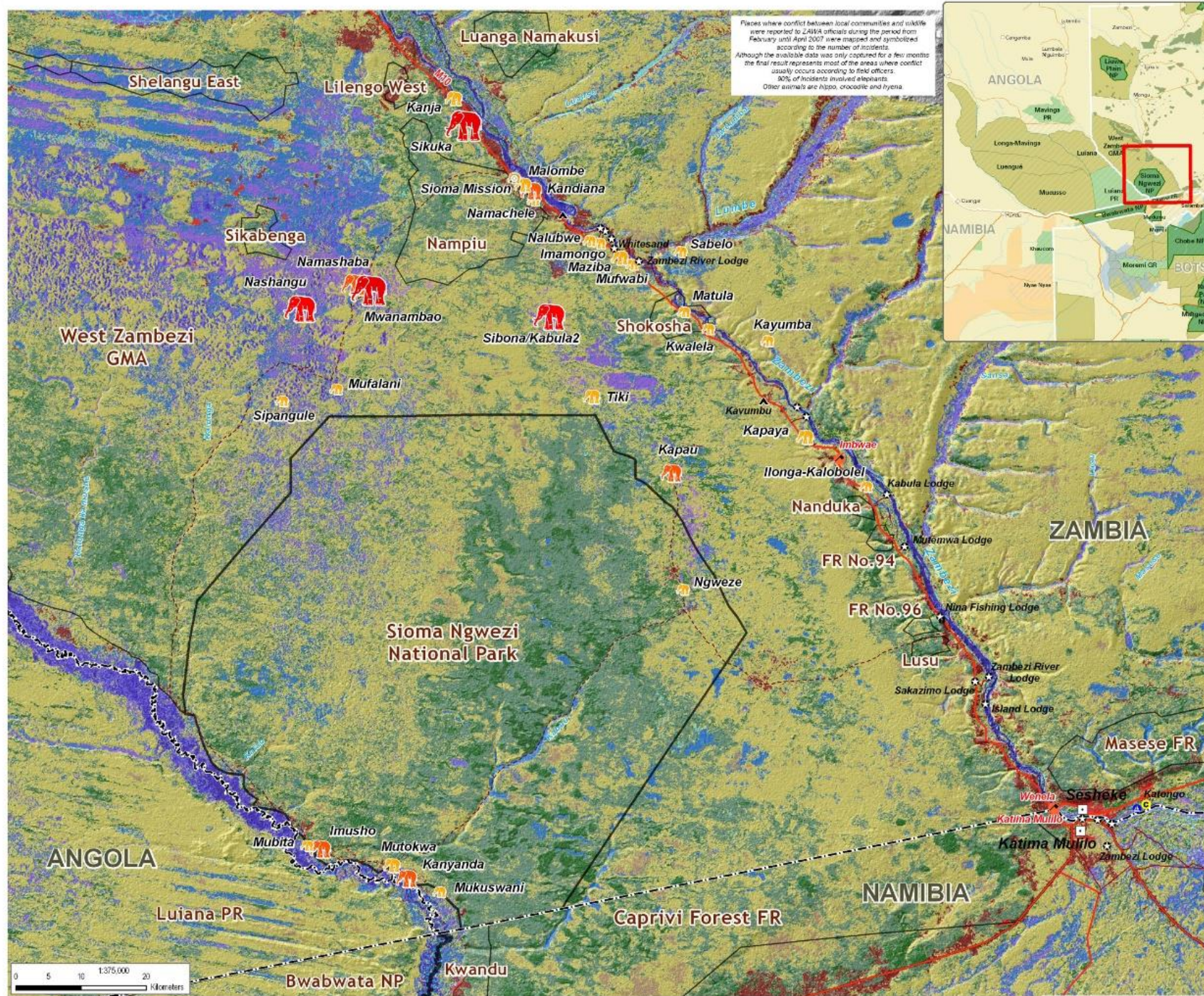
SMART



Photo: Michael Raimondo

Analysis & Results

- Operation Dashboards
- Storymaps
- Smart
- Cybertracker



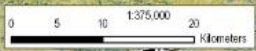
Kavango Zambezi -Zambian Component - Human-Animal Conflict Mapping

- Reported conflict incidents**
- 41 - 58
 - 31 - 40
 - 16 - 30
 - 11 - 15
 - 6 - 10
 - 2 - 5
 - 1
- Land cover classification**
- Seasonal inundation (other)
 - Seasonal inundation (main)
 - River channel (other)
 - River channel (main)
 - Wetland/floodplain
 - Wetland/seasonal
 - Woodland
 - Forest
 - Subsistence cultivation
 - Intensive cultivation (incl. irrigation)
 - Plantations
 - Urban
 - Golf course
 - Thicket & bushland
 - Open woodland / bushland
 - Cleared forest
 - Open-sparse bushland
 - Grasslands / open
 - Wet-bare
 - Non-wet bare
 - Roads

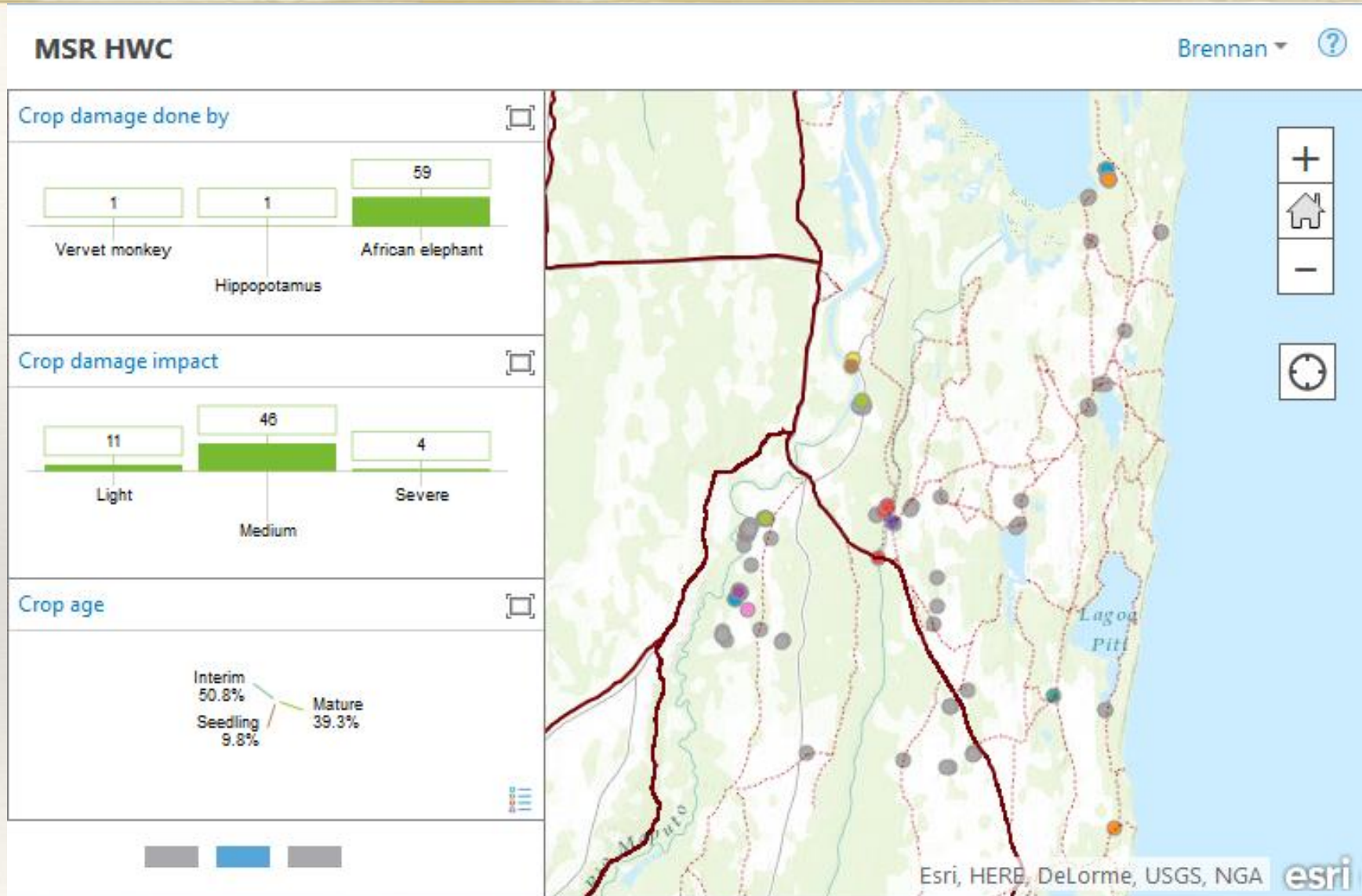
Unprojected WGS84
Cartography: Willem van Riet
Reference: kazaZb_conflictSioma_a2 (17 July 2007)
Data sources: ZAWA conflict reports February - April 2007

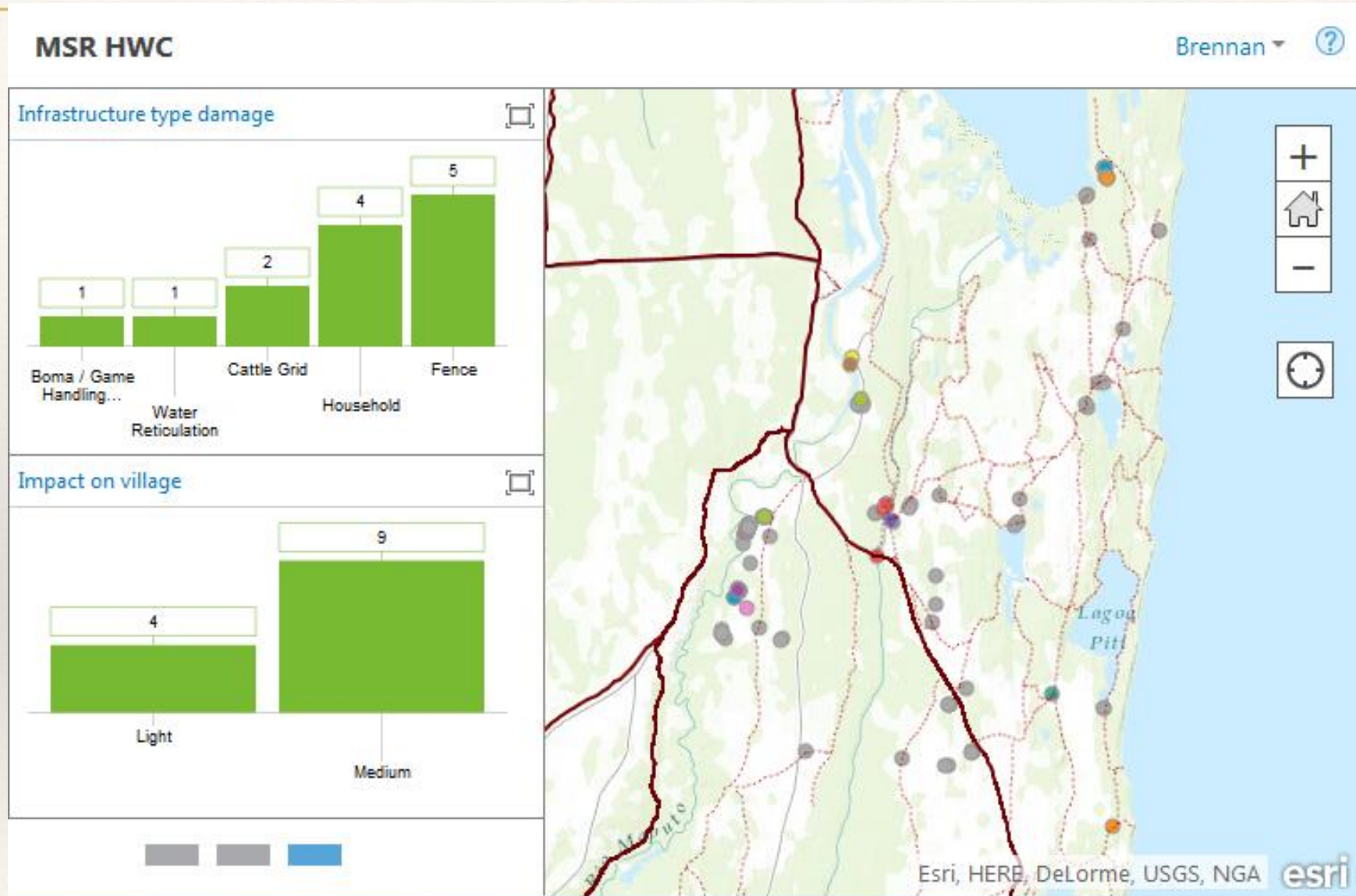


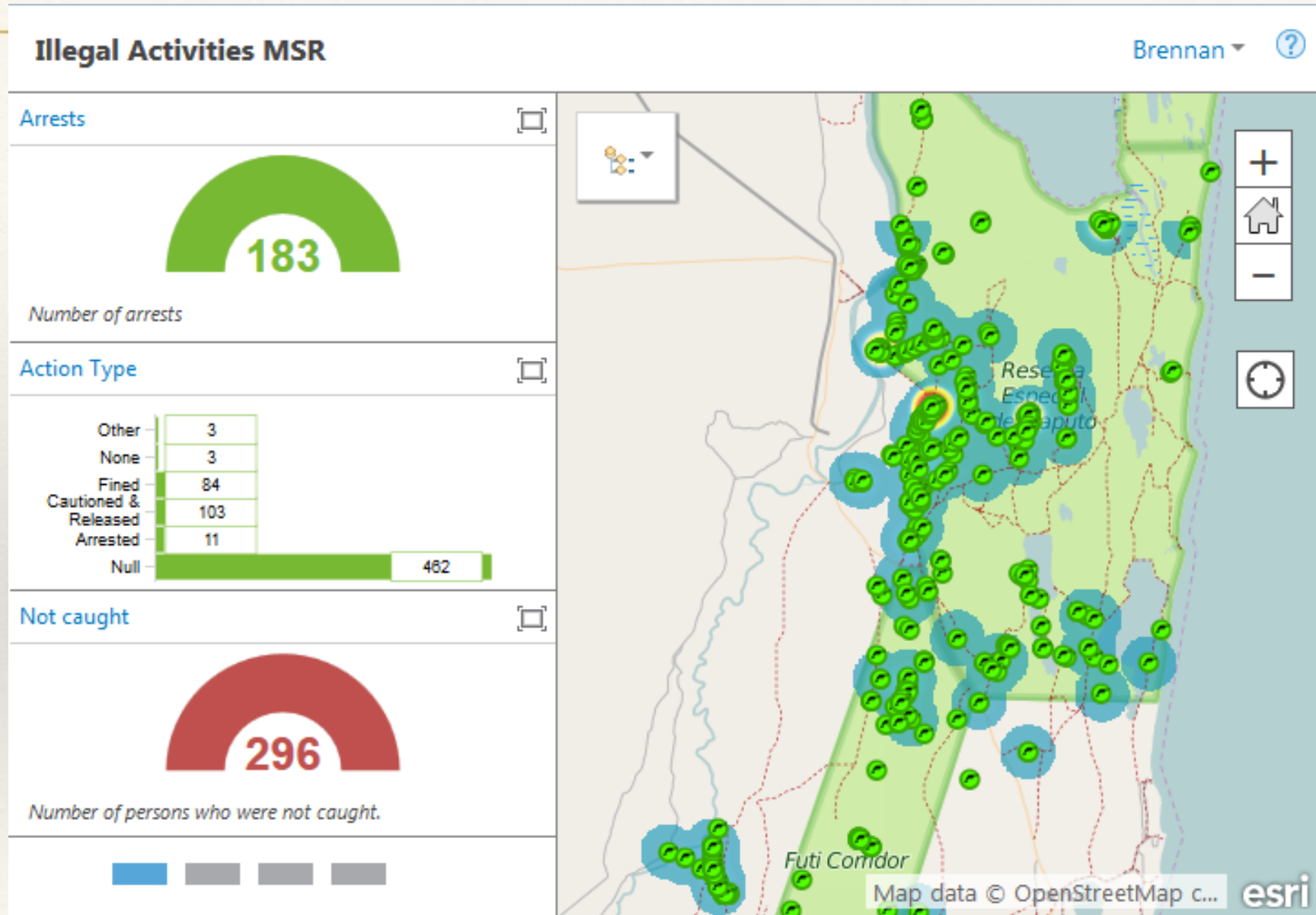
Peace Parks Foundation GIS
Mlenza Park, 10 Stellenbosch Avenue
Die Boord, Stellenbosch 7813, South Africa
Web: www.peaceparks.org Phone: +27 21 507-6188

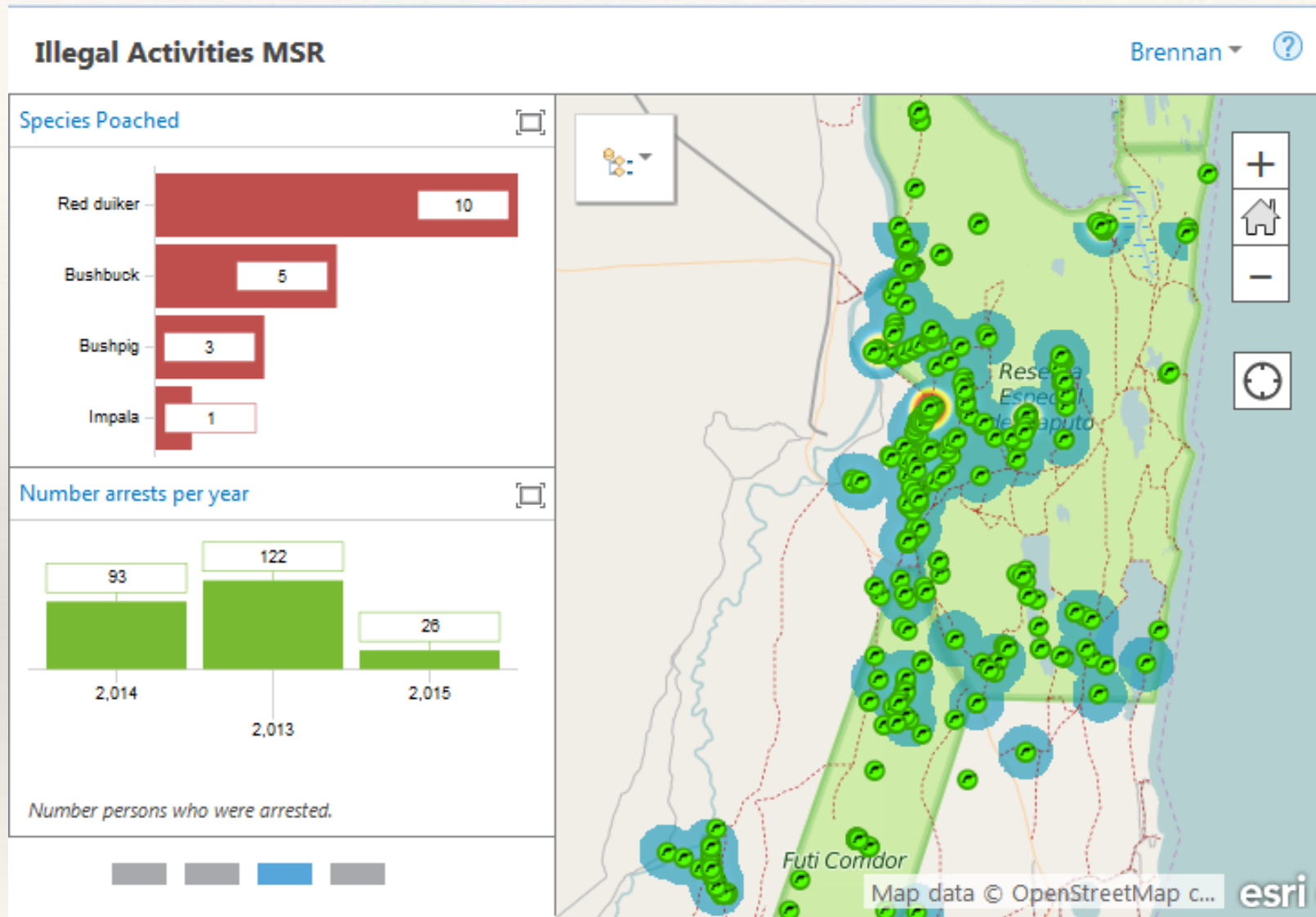


Human Wildlife conflicts









Telling a Story

Ponta do Ouro Parti...

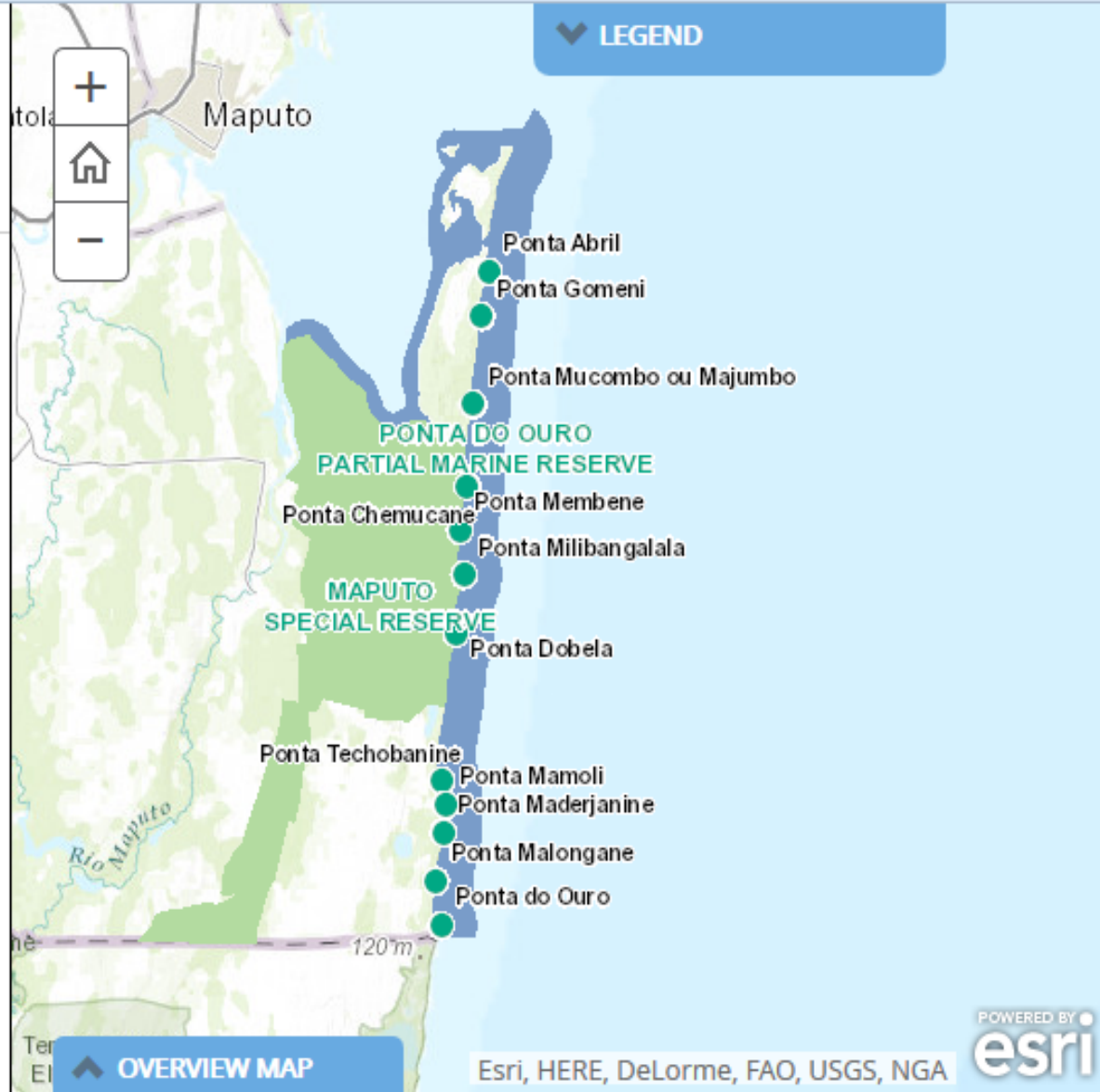


Ponta do Ouro Partial Marine Reserve

PPMR

The marine reserve is part of the first marine transfrontier conservation area (TFCA) in Africa, the Ponta do Ouro- Kosi Bay TFCA, where Mozambique's Ponta do Ouro Partial Marine Reserve turtle monitoring programme links up with the one across the border in South Africa's [iSimangaliso Wetland Park](#), a World Heritage Site, where turtles have been monitored since 1963.




The marine reserve has a rich diversity of marine life and is the most important leatherback and loggerhead turtle nesting ground along the Mozambican coast. Leatherbacks are the largest sea turtles and classified as critically endangered by the IUCN, while loggerhead sea turtles have been classified as endangered.



The fi

Turtle tagging

Mozambi

Ponta do Ouro Parti...   

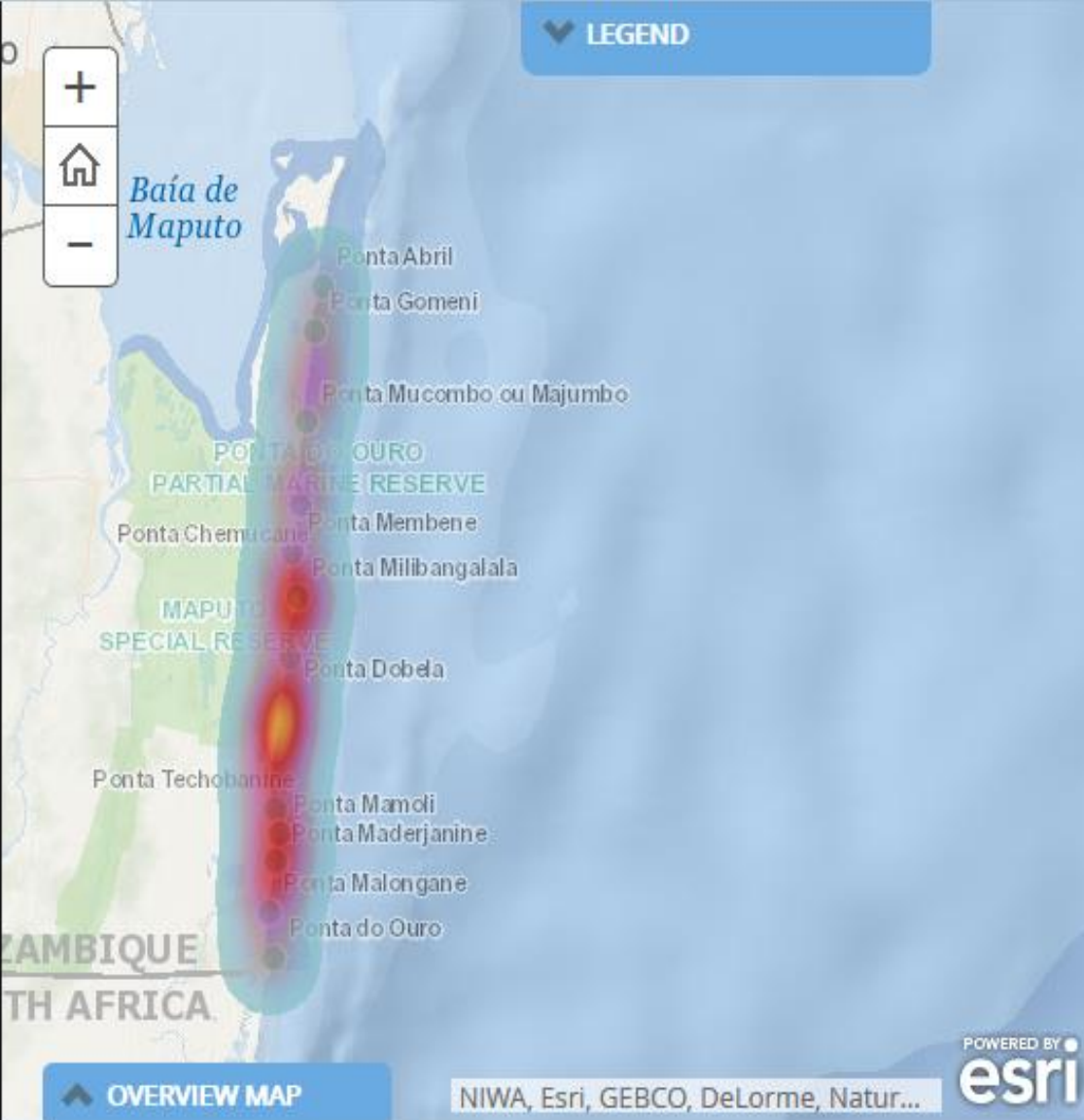
Ponta do Ouro Partial Marine Reserve

Turtle Tagging

To monitor and protect these endangered and critically endangered species, a marine turtle monitoring programme was established. Since December 2007, members of the Muvukuza community at **Milibangalala** and **Ponta do Ouro** have been trained as turtle monitors by the Associação par Investigação Costeira e Marinha (Association for Coastal and Marine Research), Centro Terra Viva and marine reserve management, whereafter they are employed for the season. The initiative also aims to raise awareness and improve understanding within the communities in an effort to further protect the turtles. Throughout the season, stretching from October to April, reserve management and turtle monitors undertake vehicle and foot

Conclusio... controls of the turtle nesting sites, the primary

LEGEND



OVERVIEW MAP

POWERED BY
